



2009 Economic Profile – Labour Force Characteristics Regional District of the Central Okanagan

© 2009
Central Okanagan Economic Development Commission
1450 KLO Road, KELOWNA, BC, V1W 3Z4
info@investkelowna.com
www.investkelowna.com
Toll Free: 1.877.332.2673
250.469.6280

Disclaimer Notice:

This document was compiled for the Economic Development Commission of the Central Okanagan by Kettle Valley Research. The information contained within this publication has been compiled from sources deemed to be reliable and while every effort has been made to ensure the accuracy of the information provided, it is not guaranteed. Readers should be aware that any information stated herein may change at any time and without notice. This publication is intended as an information source and does not imply endorsement of any service, association or organization herein.

Please also note that this publication is not inclusive of all data available at the Economic Development Commission. If you have any questions or comments about the information in this document please contact our office at (250) 469-6280, toll free (877) 332-2673, or by e-mail at info@investkelowna.com.

Copyright © 2009

By the Economic Development Commission, Regional District of the Central Okanagan (RDCO). All rights reserved, including the right of reproduction in whole, in part, or in any form.

About this Document

The Economic Profile is available online through the Economic Development Commission's website: www.investkelowna.com.

The Economic Profile was updated in spring 2009 using the most up to date information and statistics available. Statistics Canada and BC Stats are major sources of information for this document. However, because these statistics are updated throughout the year, the reader may want to compare the statistics herein with the actual federal and provincial sources:

Statistics Canada: www.statcan.ca
BC Stats: www.bcstats.gov.bc.ca

Throughout the profile, we have also included links to other websites for additional information. The Economic Development Commission of the Central Okanagan is a division of the Regional District of the Central Okanagan. Whenever possible, the information herein reflects the areas within the Regional District boundaries.

Table of Contents

1	Labour Force Characteristics	4
1.1	Definitions	4
1.2	Size of the Labour Force	5
1.3	Labour Force by Occupation	9
1.4	Employment by Industry	11
1.5	Self Employment	13
1.6	Major Employers.....	14
1.7	Unemployed Labour Force Characteristics	15
1.8	Labour Force Income Profile	15

1 Labour Force Characteristics

1.1 DEFINITIONS¹

Labour force activity - Refers to the labour market activity of the population 15 years and over in the week (Sunday to Saturday) prior to Census Day (May 16, 2006).

Labour force - Refers to persons who were either employed or unemployed during the week (Sunday to Saturday) prior to Census Day (May 16, 2006). In past censuses, this was called 'total labour force.'

Employed - Refers to persons 15 years and over, excluding institutional residents, who, during the week (Sunday to Saturday) prior to Census Day (May 16, 2006):

- a) did any work at all for pay or in self-employment or without pay in a family farm, business or professional practice;
- b) had a job or business but were absent with or without pay, for the entire week because of vacation, an illness, a labour dispute at their place of work, or any other reasons.

Unemployed - Refers to persons 15 years and over, excluding institutional residents, who, during the week (Sunday to Saturday) prior to Census Day (May 16, 2006), were without paid work or without self-employment work and were available for work and either:

- a) had actively looked for paid work in the past four weeks;
- b) were on temporary lay-off and expected to return to their job;
- c) had definite arrangements to start a new job in four weeks or less.

Not in the labour force - Refers to persons 15 years and over, excluding institutional residents, who, in the week (Sunday to Saturday) prior to Census Day (May 16, 2006), were neither employed nor unemployed. It includes students, homemakers, retired workers, seasonal workers in an 'off' season who were not looking for work, and persons who could not work because of a long-term illness or disability.

Participation rate - Refers to the labour force in the week (Sunday to Saturday) prior to Census Day (May 16, 2006), expressed as a percentage of the population 15 years and over excluding institutional residents.

Employment rate - Refers to the number of persons employed in the week (Sunday to Saturday) prior to Census Day (May 16, 2006), expressed as a percentage of the total population 15 years and over excluding institutional residents.

Unemployment rate - Refers to the unemployed expressed as a percentage of the labour force in the week (Sunday to Saturday) prior to Census Day (May 16, 2006).

¹ Statistics Canada. 2007. *Central Okanagan, British Columbia (table). 2006 Community Profiles. 2006 Census. Statistics Canada Catalogue no. 92-591-XWE. Ottawa. Released Revised March 10, 2009.*
<http://www12.statcan.ca/english/census06/data/profiles/community/Index.cfm?Lang=E> (accessed April 15, 2009).

1.2 SIZE OF THE LABOUR FORCE

1.2.1 THOMPSON OKANAGAN

The economy in BC's Southern Interior has experienced continued growth over the past several years. Unemployment rose for the first time in several years resulting in part from an increase in the overall labour force and participation rate.

Labour Force Characteristics, Population 15 Years and Older, Thompson Okanagan – 1996 to 2008²

	Total population 15 years and over (000s)	In the labour force (000s)	Employed (000s)	Un-employed (000s)	Not in the labour force (000s)	Participation rate %	Employment rate %	Unemployment rate %
1996	359.2	223.8	200.3	23.5	135.4	62.3	55.8	10.5
1997	365.8	224.9	206.1	18.7	140.9	61.5	56.3	8.3
1998	370.3	226.0	207.4	18.6	144.3	61.0	56.0	8.2
1999	374.0	228.1	206.1	22.0	145.9	61.0	55.1	9.6
2000	377.3	231.7	210.3	21.5	145.5	61.4	55.7	9.3
2001	380.8	231.8	210.2	21.6	149.0	60.9	55.2	9.3
2002	385.0	229.8	208.1	21.7	155.1	59.7	54.1	9.4
2003	390.2	239.9	218.8	21.1	150.3	61.5	56.1	8.8
2004	396.7	245.9	229.7	16.2	150.7	62.0	57.9	6.6
2005	404.3	257.6	244.0	13.6	146.7	63.7	60.4	5.3
2006	413.8	267.4	253.7	13.7	146.4	64.6	61.3	5.1
2007	423.0	268.5	256.7	11.8	154.5	63.5	60.7	4.4
2008	431.0	280.5	265.0	15.5	150.5	65.1	61.5	5.5

Labour Force Characteristics, Population 15 Years and Older, British Columbia³

B.C.	Mar-09	Apr-09	March 2009 to April 2009	April 2008 to April 2009	March 2009 to April 2009	April 2008 to April 2009
	thousands				%	
Population	3,685.80	3,690.40	4.6	63.5	0.1	1.8
Labour force	2,420.20	2,437.10	16.9	10.1	0.7	0.4
Employment	2,240.10	2,257.40	17.3	-62.8	0.8	-2.7
Unemployment	180.1	179.8	-0.3	73	-0.2	68.4
Participation rate (%)	65.7	66	0.3	-0.9
Unemployment rate (%)	7.4	7.4	0	3
Employment rate (%)	60.8	61.2	0.4	-2.8

² Statistics Canada, Statistics Canada, CANSIM, table (for fee) 282-0055 and Catalogue no. 71-001-PIB. Last modified: 2009-01-09. <http://www40.statcan.gc.ca/l01/cst01/labor36c-eng.htm> (Accessed April 15, 2009)

³ Statistics Canada, CANSIM, table (for fee) 282-0087 and Catalogue no. 71-001-XIE. Last modified: 2009-05-08. (Accessed May 14, 2009)

1.2.2 CENTRAL OKANAGAN (RDCO)

The Central Okanagan has experienced consistently high population growth over the past decade. The numbers of people in the labour force as well as those not in the labour force have raised along with the population. In 2008, the participation rate rebounded after a small decline in 2007. Both the employment rate and unemployment rates increased, due in large part to a significant increase in the overall size of the labour force.

Labour Force Characteristics, Population 15 Years and Older, Central Okanagan – 1996 - 2008⁴

	Total population 15 years and over (000s)	In the labour force (000s)	Employed (000s)	Un-employed (000s)	Not in the labour force (000s)	Participation rate %	Employment rate %	Unemployment rate %
1996	113.5	73.6	66.8	6.9	39.8	64.8	58.9	9.4
1997	116.6	71.4	65.3	6.1	45.2	61.2	56.0	8.5
1998	119.1	75.8	70.3	5.5	43.4	63.6	59.0	7.3
1999	121.5	76.4	69.9	6.5	45.1	62.9	57.5	8.5
2000	123.6	77.9	71.9	6.0	45.7	63.0	58.2	7.7
2001	125.8	80.6	75.3	5.3	45.1	64.1	59.9	6.6
2002	128.2	81.7	73.8	7.9	46.5	63.7	57.6	9.7
2003	131.0	82.3	75.2	7.2	48.6	62.8	57.4	8.7
2004	134.3	87.0	82.6	4.3	47.3	64.8	61.5	4.9
2005	138.0	86.4	81.7	4.7	51.6	62.6	59.2	5.4
2006	143.4	92.4	86.9	5.5	51.0	64.4	60.6	6.0
2007	148.7	92.5	88.2	4.2	56.2	62.2	59.3	4.5
2008	152.7	100.4	95.3	5.1	52.3	65.7	62.4	5.1

⁴ BC Stats, Labour Force Activity by Selected B.C. Cities - Annual Averages, <http://www.bcstats.gov.bc.ca/data/dd/handout/lfscity.pdf> (Accessed April 16, 2009)

1.2.3 LABOUR FORCE CHARACTERISTICS BY GENDER – 2006⁵

Labour force characteristics for the Central Okanagan are similar to the province as a whole. However, significant job growth in relation to the increase in labour force has resulted in a lower unemployment rate for the region for both males and females. The region's older population base contributes to the lower labour force participation rate (64.0%).

Labour Force Characteristics by Gender, RDCO and BC – 2006

	Central Okanagan (RDCO)			BC		
	Total	Male	Female	Total	Male	Female
Total population 15 years and over	135,045	48.3%	51.7%	3,394,910	48.6%	51.4%
In the labour force	86,390	52.1%	47.9%	2,226,380	52.4%	47.6%
Employed	82,005	52.4%	47.6%	2,092,770	52.5%	47.5%
Unemployed	4,385	47.8%	52.2%	133,615	50.2%	49.8%
Not in the labour force	48,655	41.6%	58.4%	1,168,525	41.3%	58.7%
Participation rate	64.0%	69.0%	59.3%	65.6%	70.7%	60.7%
Employment rate	60.7%	65.8%	56.0%	61.6%	66.7%	56.9%
Unemployment rate	5.1%	4.7%	5.5%	6.0%	5.8%	6.3%

⁵ Statistics Canada. 2007. *Central Okanagan, British Columbia (table). 2006 Community Profiles. 2006 Census. Statistics Canada Catalogue no. 92-591-XWE. Ottawa. Updated March 10, 2009.*
<http://www12.statcan.ca/english/census06/data/profiles/community/Index.cfm?Lang=E> (accessed April 15, 2009)

1.2.4 SIZE OF LABOUR FORCE BY COMMUNITY

Labour force characteristics vary by community within the Central Okanagan; Kelowna accounts for two thirds of the regions labour force (66.3%). Lake Country had the highest labour force participation rate (69.4%). Peachland had a significantly lower participation rate than the region as a whole (52.6%).

Labour Force Characteristics, Population 15 Years and Older, by Community - 2006⁶

	Total population 15 years and over	In the labour force	Employed	Un-employed	Not in the labour force	Participation rate %	Employment rate %	Unemployment rate %
Central Okanagan (RCDO)	135,045	86,390	82,005	4,385	48,655	64.0%	60.7%	5.1%
Kelowna	88,810	57,305	54,525	2,775	31,505	64.5%	61.4%	4.8%
West Kelowna ⁷	22,160	14,395	13,555	835	7,765	65.0%	61.2%	5.8%
Lake Country	7,950	5,515	5,250	270	2,430	69.4%	66.0%	4.9%
Peachland	4,325	2,275	2,155	115	2,050	52.6%	49.8%	5.1%

⁶ Statistics Canada. 2007. *Central Okanagan, British Columbia (table). 2006 Community Profiles. 2006 Census. Statistics Canada Catalogue no. 92-591-XWE. Ottawa. Updated March 10, 2009.*

<http://www12.statcan.ca/english/census06/data/profiles/community/Index.cfm?Lang=E> (accessed April 15, 2009)

⁷ Statistics Canada, Custom Data Run, West Kelowna Geography, 2006 Census Data, April 2009

1.3 LABOUR FORCE BY OCCUPATION

The most common occupations in the Central Okanagan were in the sales and service occupations category. The majority of these sales and service occupations were held by women (60.3%). Business, finance and administration occupations were the second largest occupational category. Again, the majority of these occupations were held by women (76.0%).

Labour Force by Occupation, Central Okanagan and BC - 2006⁸

	Central Okanagan - RDCO			BC		
	Total	Male	Female	Total	Male	Female
Total experienced labour force 15 years and over	85,630	52.2%	47.8%	2,193,115	52.5%	47.5%
Management occupations	9,745	63.9%	36.1%	229,945	62.9%	37.1%
Business, finance and administration occupations	14,460	24.0%	76.0%	375,975	27.4%	72.6%
Natural and applied sciences and related occupations	3,845	81.9%	18.1%	138,955	79.5%	20.5%
Health occupations	4,940	20.6%	79.3%	120,360	22.0%	78.0%
Occupations in social science, education, government service and religion	5,580	30.5%	69.7%	178,040	33.6%	66.4%
Occupations in art, culture, recreation and sport	2,395	47.0%	53.0%	76,460	46.5%	53.5%
Sales and service occupations	22,580	39.7%	60.3%	555,880	40.8%	59.2%
Trades, transport and equipment operators and related occupations	15,075	93.7%	6.3%	339,500	93.4%	6.6%
Occupations unique to primary industry	3,755	68.6%	31.4%	86,460	71.9%	28.1%
Occupations unique to processing, manufacturing and utilities	3,260	72.4%	27.5%	91,545	70.9%	29.1%

⁸ Statistics Canada. 2007. *Central Okanagan, British Columbia (table). 2006 Community Profiles. 2006 Census. Statistics Canada Catalogue no. 92-591-XWE. Ottawa. Updated March 10, 2009.*
<http://www12.statcan.ca/english/census06/data/profiles/community/Index.cfm?Lang=E> (accessed April 15, 2009).

Labour Force by Occupation, by Community – 2006⁹

	RDCO	Kelowna	West Kelowna¹⁰	Lake Country	Peachland	Central Okanagan (EA)
Total experienced labour force 15 years and over	85,630	56,800	14395.0	5,490	2,265	2,240
Management occupations	11.4%	11.0%	13.6%	10.8%	10.4%	11.8%
Business, finance and administration occupations	16.9%	17.3%	16.1%	15.2%	14.3%	17.4%
Natural and applied sciences and related occupations	4.5%	4.4%	4.4%	6.6%	4.4%	4.5%
Health occupations	5.8%	5.9%	5.8%	6.2%	6.0%	4.0%
Occupations in social science, education, government service and religion	6.5%	6.8%	5.8%	7.2%	4.0%	7.4%
Occupations in art, culture, recreation and sport	2.8%	3.1%	2.5%	2.1%	2.4%	1.8%
Sales and service occupations	26.4%	27.0%	25.3%	21.2%	27.4%	20.5%
Trades, transport and equipment operators and related occupations	17.6%	16.6%	18.0%	20.2%	21.4%	21.9%
Occupations unique to primary industry	4.4%	4.1%	4.1%	6.7%	7.1%	6.3%
Occupations unique to processing, manufacturing and utilities	3.8%	3.8%	3.5%	3.7%	3.1%	4.2%

⁹ Statistics Canada. 2007. *Central Okanagan, British Columbia (table). 2006 Community Profiles. 2006 Census. Statistics Canada Catalogue no. 92-591-XWE. Ottawa. Updated March 10, 2009.*

<http://www12.statcan.ca/english/census06/data/profiles/community/Index.cfm?Lang=E> (accessed April 15, 2009)

¹⁰ Statistics Canada, Custom Data Run, West Kelowna Geography, 2006 Census Data, April 2009

1.4 EMPLOYMENT BY INDUSTRY

There were several key changes in employment by industry between 2007 and 2008. The total number of persons employed rose 3% to 265,000, lead by the goods producing sector which grew by 3.2% overall. Employment growth in the goods producing sector was lead by growth in construction jobs which increased 22.7%.

Service sector employment also grew by 2.3% lead by Professional, scientific and technical services (27.5%), and Transportation and warehousing (17.3%).

Employment by Industry for BC Development Regions (000s) – Thompson Okanagan¹¹

	2003	2004	2005	2006	2007	2008
Total employed, all industries	218.8	229.7	244.0	253.7	256.7	265.0
Goods-producing sector	52.7	59.1	65.0	69.8	67.9	72.0
Agriculture	7.0	7.6	7.0	7.8	7.7	7.0
Forestry, fishing, mining, oil and gas	6.9	5.5	5.5	8.0	6.7	7.8
Utilities	-	-	-	1.5	-	1.9
Construction	13.6	18.8	24.1	27.3	26.4	32.4
Manufacturing	23.9	26.3	27.1	25.2	25.8	23.0
Services-producing sector	166.1	170.6	179.0	183.9	188.7	193.0
Trade	38.9	37.4	39.7	42.2	44.4	41.6
Transportation and warehousing	12.2	12.0	11.6	10.9	9.8	11.5
Finance, insurance, real estate and leasing	10.4	11.3	14.6	15.5	15.1	11.9
Professional, scientific and technical services	10.4	9.0	14.2	13.4	12.6	12.0
Business, building and other support services	8.3	10.9	7.2	9.1	10.3	11.1
Educational services	14.1	13.8	12.1	14.1	15.4	16.6
Health care and social assistance	26.2	26.2	29.4	32.1	30.6	35.1
Information, culture and recreation	9.3	13.2	10.5	10.6	9.5	12.1
Accommodation and food services	19.5	19.5	23.0	19.0	21.3	22.1
Other services	10.1	10.6	8.2	8.4	10.8	10.0
Public administration	6.7	6.7	8.4	8.6	8.9	9.0

¹¹ Statistics Canada, Labour Force Survey, Annual Averages Prepared by: BC STATS, January 23, 2009, <http://www.bcstats.gov.bc.ca/DATA/dd/handout/EMPREGN.pdf>, (Accessed April 15, 2009)

The largest portion of employment by industry in the Central Okanagan is business services (17.4%), retail trade (13.1%), and constructions (11.6%) industries. Combined other services also accounted for a significant portion of the labour force (18.9%). Other services contain a diverse range categories, examples are listed below.

Employment by Industry by Community¹²

	RDCO	Kelowna	Lake Country	Peachland	West Kelowna ¹³
Total experienced labour force 15 years and over	85,630	56,800	5,490	2265	14260.0
Agriculture and other resource-based industries	4.4%	4.1%	7.7%	4.2%	3.9%
Construction industries	11.6%	11.0%	12.8%	10.6%	12.7%
Manufacturing industries	8.1%	7.6%	8.7%	7.7%	9.1%
Wholesale trade	3.8%	3.5%	5.1%	3.5%	4.2%
Retail trade	13.1%	13.3%	8.8%	11.5%	13.4%
Finance and real estate	6.4%	6.7%	5.3%	6.4%	6.2%
Health care and social services	10.7%	11.3%	8.7%	9.7%	10.2%
Educational services	5.5%	5.8%	5.1%	4.6%	4.8%
Business services	17.4%	16.9%	20.3%	22.1%	23.1%
Other services (except Public Administration)	18.9%	19.8%	17.5%	19.4%	12.5%

Note: "Other services" include¹⁴:

- Repair and Maintenance - Automotive
- Electronic and Precision Equipment Repair and Maintenance
- Commercial and Industrial Machinery and Equipment (except Automotive and Electronic) Repair and Personal and Household Goods Repair and Maintenance
- Personal and Laundry Services
- Death Care Services
- Dry Cleaning and Laundry Services
- Other Personal Services
- Religious, Grant Making, Civic, Professional, and Similar Organizations
- Social Advocacy Organizations
- Civic and Social Organizations
- Business, Professional, Labour, Political, and Similar Organizations
- Private Households

¹² Statistics Canada. 2007. *Central Okanagan, British Columbia (table). 2006 Community Profiles. 2006 Census. Statistics Canada Catalogue no. 92-591-XWE. Ottawa. Updated March 10, 2009.*
<http://www12.statcan.ca/english/census06/data/profiles/community/Index.cfm?Lang=E> (accessed April 15, 2009)

¹³ Statistics Canada, Custom Data Run, West Kelowna Geography, 2006 Census Data, April 2009

¹⁴ NAICS, 2007 NAICS Codes and Titles <http://www.census.gov/naics/2007/NAICOD07.HTM#N81> (Accessed April 15, 2009)

1.5 SELF EMPLOYMENT

The number of self-employed workers in the Central Okanagan grew to 13,760 in 2006. The portion of self employed workers is higher in the Central Okanagan (15.9%) compared to the province as a whole (14.1%). The largest segments of self-employed workers in the Central Okanagan were in unincorporated businesses (10.6%) with the majority of these being small companies without paid help.

Overall, the province has experienced significant growth in self employment. Between 2002 and 2007, the average growth in self employment was 17.9%. The Kootenay region led the province recording a robust 27.3% increase over the five-year period. However, this was just 2.4% higher than the next fastest growing region, Thompson-Okanagan, at 24.9%.¹⁵

Labour Force by Class of Worker¹⁶

	Central Okanagan (RDCO)		BC
	Labour Force	% of Labour Force	% of Labour Force
Total labour force	86,390	100.0%	2,226,385
Class of worker - Not applicable	760	0.9%	1.5%
All classes of worker	85,630	99.1%	98.5%
Paid workers	76,155	88.2%	89.0%
Employees	71,545	82.8%	84.1%
Self Employed Total	13,760	15.9%	14.1%
Self-employed (incorporated)	4,615	5.3%	4.9%
Without paid help	1,580	1.8%	1.8%
With paid help	3,030	3.5%	3.1%
Self-employed (unincorporated)	9,145	10.6%	9.2%
Without paid help	6,420	7.4%	6.5%
With paid help	2,720	3.1%	2.7%
Unpaid family workers	325	0.4%	0.3%

¹⁵ *Small Business Profile 2008: A Profile of Small Business in British Columbia, October 2008 Edition*, http://www.bcstats.gov.bc.ca/data/bus_stat/busind/sm_bus/SBP2008.pdf (Accessed April 15, 2008)

¹⁶ Source: Statistics Canada 2006 Census, Custom Table run prepared by BC Stats May 22, 2008

1.6 MAJOR EMPLOYERS

The majority (more than 80%) of companies in the Central Okanagan have fewer than 20 employees. The major employers in the region are listed below. Many of these companies also employ workers outside of the Central Okanagan. In previous years only total employees were reported. 2009 is reported as full time equivalent.

Information based on number of employees on staff as of April 1, 2009.

Major Employers List for the Central Okanagan as of April 1, 2009¹⁷

Company	2009 FTE	2008 Total Emp.	2007 Total Emp.	2006 Total Emp.
Interior Health Authority	2,425	3,420	3,779	4,589
SD #23	2,090	2,400	2,500	2,285
City of Kelowna	722	720	793	789
Okanagan College	N/A	659	644	659
UBC Okanagan	633	485-1,111	585-1,160	398
Wal-Mart (Kelowna & Westbank)	573	N/A	N/A	N/A
Kelowna Flightcraft Air Charter	525	575	575	550
Overwaitea Food Group (Save-On Foods, Coopers)	476	703	657	673
Big White Ski Resort	399	860	765	765
Shaw Cablesystems G.P.	375	369	347	280
Sun-Rype Products Ltd.	368	371	374	430
Disney Online Studios Canada (Club Penguin)	292	200	N/A	N/A
Tolko Industries Ltd	258	314	330	451
Costco Wholesale Corporation	248	298	252	223
The Grand Okanagan Resort	246	284	324	294
Canada Safeway (Dilworth and Bernard locations)	218	N/A	N/A	N/A
Fortis	194	194	N/A	N/A
HBC Group of Companies	192	N/A	N/A	N/A
The Home Depot (Kelowna & Westbank)	190	295	168	200
Sysco HRI	171	172	184	175
Lake City Casino	144	147	202	195
Coast Capri Hotel	134	153	175	152
SRI Homes	114	230	220	225
Manteo Resort	105	168	205	277
Regional District of the Central Okanagan	97	N/A	180	190
Campion Marine	80	160	200	190
Rona Revy Incorporated	74	200	210	240
Ramada Lodge Hotel	74	105	N/A	N/A
Best Western	61	55	N/A	N/A
Terasen	47	44	N/A	N/A
Loblaws (Superstore Kelowna, Extra Foods Kelowna and Westbank)	*626	Total employees includes F/T and P/T, FTE not available		

Note: listing in the database is voluntary and not all major employers in the Central Okanagan are included.

¹⁷ Central Okanagan Economic Development Commission, by phone and e-mail, May 2009

1.7 UNEMPLOYED LABOUR FORCE CHARACTERISTICS

1.7.1 UNEMPLOYMENT RATES

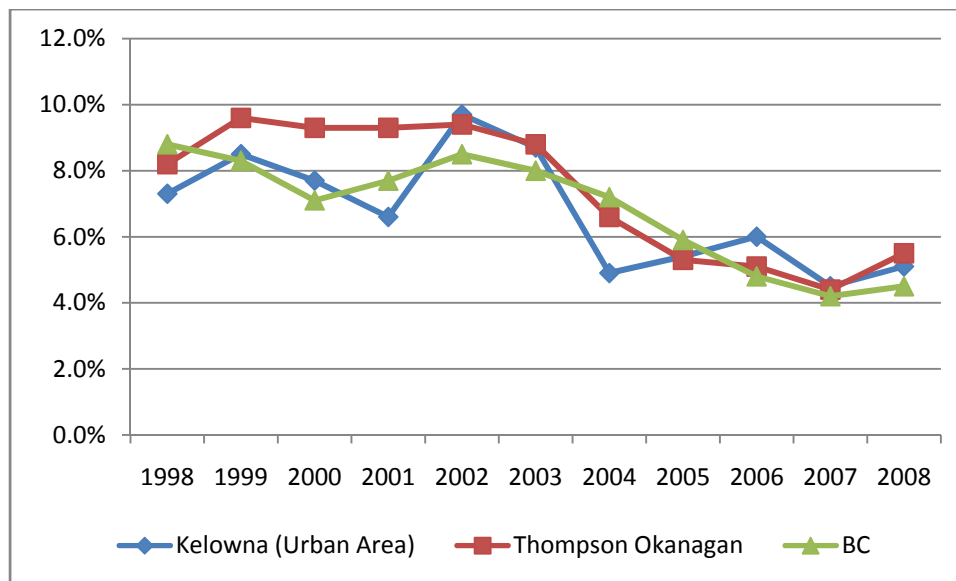
Unemployment rates have continued to decline over the past several years in both BC and the Thompson Okanagan development region. The unemployment rate for BC in 2008 was 4.5% and was 5.5% for the Thompson Okanagan. Kelowna's unemployment rate in 2008 was also low at 5.1%.

Kelowna's unemployment rate has been more volatile than for the province and development region. Reasons for this include the seasonal nature of some industries and continued high levels of population growth.

Annual Average Unemployment Rates 1999 to 2008^{18, 19}

	Kelowna (Urban Area)	Thompson Okanagan	BC
1999	8.5%	9.6%	8.3%
2000	7.7%	9.3%	7.1%
2001	6.6%	9.3%	7.7%
2002	9.7%	9.4%	8.5%
2003	8.7%	8.8%	8.0%
2004	4.9%	6.6%	7.2%
2005	5.4%	5.3%	5.9%
2006	6.0%	5.1%	4.8%
2007	4.5%	4.4%	4.2%
2008	5.1%	5.5%	4.5%

Annual Average Unemployment Rates 1998 to 2008



1.8 LABOUR FORCE INCOME PROFILE

¹⁸ BC Stats, Quarterly Regional Statistics, First Quarter 2009, <http://www.bcstats.gov.bc.ca/pubs/qrs/rd35.pdf>. (Accessed April 15, 2009)

¹⁹ BC Stats, British Columbia Unemployment Rates, January 2008, <http://www.bcstats.gov.bc.ca/data/lss/lfs/ur08.pdf>. (Accessed April 15, 2009)

There were a total of 126,380 2006 tax filers in the Central Okanagan reporting a total of almost \$4.9 billion in income. The median 2006 employment income for the Central Okanagan was \$26,473. Lake Country had the highest 2006 median employment income (\$28,735) in the regional district.

2006 Labour Force Income Profile²⁰

	Total # of Tax Filers	Total Amt of Total Income (\$000s)	Median Employment Income (\$)
Central Okanagan (RDCO)	126,380	4,869,353	26,473
Kelowna	98,150	3,853,999	26,611
Lake Country	7,520	289,385	28,735
Peachland	4,170	148,989	22,668
Central Okanagan J (West Kelowna not available)	16,440	575,978	25,187
Central Okanagan (EA)	110	1,002	9,106

Employment income was the largest source of income in the Central Okanagan (59.1%). However, the portion of employment income reported in the Central Okanagan was lower than for the province overall (65.9%). This was likely due to the large retirement base and the larger than average number of self-employed individuals. The proportion of pension and investment income in the Central Okanagan was higher than the province overall.

Source of Total Income 2006²¹

	Central Okanagan (RDCO)		BC
	(\$000s)	(% of Total)	(% of Total)
Employment	\$2,933,873	59.1%	65.9%
Pension	794,642	16.0%	12.5%
Investment	598,038	12.0%	8.6%
Self-Employment	290,432	5.8%	6.0%
Other	265,444	5.3%	5.0%
Tax Exempt	80,658	1.6%	2.0%
Total	\$4,967,922	100.0%	100.0%

²⁰ BC Stats, *Neighborhood Income and Demographics, 2006*, April 2008, <http://www.bcstats.gov.bc.ca/data/dd/nid06/nidlocdata2006.pdf>, (Accessed April 15, 2009)

²¹ BC Stats, *Community Facts, Central Okanagan*, February 26, 2009, <http://www.bcstats.gov.bc.ca/data/dd/facsheet/cf090.pdf>, (Accessed April 15, 2009)

Lake Country had the highest portion of income reported as employment income within the Central Okanagan Regional District (62.7%). Peachland reported the highest overall portion of income coming from pensions (24.3%).

Source of Total Income 2006²²

	RDCO	Kelowna	West Kelowna	Lake Country	Peachland
Total (\$000s)	\$4,967,922	\$3,930,170	N/A	\$237,751	\$153,644
Employment	59.1%	59.3%	N/A	62.7%	51.6%
Pension	16.0%	15.3%	N/A	11.8%	24.3%
Investment	12.0%	12.5%	N/A	13.1%	8.6%
Self-Employment	5.8%	6.0%	N/A	6.0%	6.0%
Other	5.3%	5.2%	N/A	4.7%	5.0%
Tax Exempt	1.6%	1.6%	N/A	1.6%	2.0%

²² BC Stats, Community Facts, Central Okanagan, February 26, 2009, <http://www.bcstats.gov.bc.ca/data/dd/facsheet/cf090.pdf>, <http://www.bcstats.gov.bc.ca/data/dd/facsheet/cf091.pdf>, <http://www.bcstats.gov.bc.ca/data/dd/facsheet/cf092.pdf> (Accessed April 15, 2009)

