



## 2009 Economic Profile - Population Regional District of the Central Okanagan

© 2009  
**Central Okanagan Economic Development Commission**  
1450 KLO Road, KELOWNA, BC, V1W 3Z4  
info@investkelowna.com  
www.investkelowna.com  
Toll Free: 1.877.332.2673  
250.469.6280

## Disclaimer Notice:

This document was compiled for the Economic Development Commission of the Central Okanagan by Kettle Valley Research. The information contained within this publication has been compiled from sources deemed to be reliable and while every effort has been made to ensure the accuracy of the information provided, it is not guaranteed. Readers should be aware that any information stated herein may change at any time and without notice. This publication is intended as an information source and does not imply endorsement of any service, association or organization herein.

Please also note that this publication is not inclusive of all data available at the Economic Development Commission. If you have any questions or comments about the information in this document please contact our office at (250) 469-6280, toll free (877) 332-2673, or by e-mail at [info@investkelowna.com](mailto:info@investkelowna.com).

Copyright © 2009

By the Economic Development Commission, Regional District of the Central Okanagan (RDCO). All rights reserved, including the right of reproduction in whole, in part, or in any form.

## About this Document

The Economic Profile is available online through the Economic Development Commission's website:  
[www.investkelowna.com](http://www.investkelowna.com).

The Economic Profile was updated in spring 2009 using the most up to date information and statistics available. Statistics Canada and BC Stats are major sources of information for this document. However, because these statistics are updated throughout the year, the reader may want to compare the statistics herein with the actual federal and provincial sources:

Statistics Canada: [www.statcan.ca](http://www.statcan.ca)

BC Stats: [www.bcstats.gov.bc.ca](http://www.bcstats.gov.bc.ca)

Throughout the profile, we have also included links to other websites for additional information. The Economic Development Commission of the Central Okanagan is a division of the Regional District of the Central Okanagan. Whenever possible, the information herein reflects the areas within the Regional District boundaries.

## Table of Contents

1	Population .....	4
1.1	Population Distribution .....	4
1.2	Population Density by Area .....	5
1.3	Population Growth Components .....	7
1.4	Migration Components .....	8
1.5	Population Growth Projections.....	9
1.6	Forecast Population Growth by Component.....	10
1.7	Population Demographics .....	11
1.8	Household Characteristics.....	21

# 1 Population

## 1.1 POPULATION DISTRIBUTION

The total population for the Central Okanagan from the 2006 Census was 167,417. The estimated population for 2009 is 180,234. Population growth in the Central Okanagan has historically outpaced growth in the province overall. Note that the large percentage change in unincorporated areas resulted from the incorporation of West Kelowna in 2008.

### Population Growth<sup>1</sup>

	1996	2001	2006	2007	2008	% Change	2009 <sup>2</sup> (Estimates)
British Columbia	3,724,500	3,907,738	4,113,487	4,310,305	4,399,200	1.7%	4,448,134
<b>Central Okanagan</b>	141,628	154,156	167,417	174,052	180,114	3.5%	180,234
Kelowna	92,859	100,512	110,351	114,731	118,507	3.3%	119,253
Lake Country	9,330	9,518	9,790	10,233	11,051	8.0%	N/A
Peachland	4,675	4,710	4,938	5,125	5,232	2.1%	N/A
West Kelowna	n/a	n/a	n/a	n/a	27,161	n/a	N/A
Unincorporated Areas	34,764	39,416	42,338	43,963	18,163	-58.7%	N/A

Note: BC Stats populations generally differs from Statistics Canada census counts and projections.

<sup>1</sup> *Municipalities, Regional Districts and Development Regions Population Estimates, BC STATS, Service BC, BC Ministry of Labour and Citizens' Services, February 2009,*

[http://www.bcstats.gov.bc.ca/data/pop/pop/mun/PopulationEstimates\\_1996-2008.xls](http://www.bcstats.gov.bc.ca/data/pop/pop/mun/PopulationEstimates_1996-2008.xls) (Accessed April 16, 2009)

<sup>2</sup> *Financial Post, 2009, FP Markets Canadian Demographics 2009*

## 1.2 POPULATION DENSITY BY AREA

The total land area of the Central Okanagan is 2,904 square kilometres. The population density for the region is 55.9 persons/square kilometre. Density ranges from a high of 504.1 persons / square kilometre in the City of Kelowna to a low of 3.2 persons / square kilometre in Central Okanagan East Electoral Area.

### Population Density by Area<sup>3</sup>

	2006 Population	% of Region	Land area (square km)	% of Region	Population density per square km
British Columbia	4,113,487		924,815.43		4.4
Central Okanagan	162,276	3.9%	2,904.01	0.3%	55.9
City of Kelowna	106,707	65.8%	211.69	7.3%	504.1
District of West Kelowna <sup>4</sup>	27,095	16.7%	121.42	4.2%	233.2
District of Lake Country	9,606	5.9%	122.16	4.2%	78.6
District of Peachland	4,883	3.0%	15.98	0.6%	305.6
Central Okanagan J (Including West Kelowna)	28,972	17.9%	1,297.81	44.7%	22.3
Central Okanagan (EA)	3,978	2.5%	1,244.16	42.8%	3.2

<sup>3</sup> Statistics Canada. 2007. Central Okanagan, British Columbia (table). 2006 Community Profiles. 2006 Census. Statistics Canada Catalogue no. 92-591-XWE. Ottawa. Released March 10, 2009.

<http://www12.statcan.ca/english/census06/data/profiles/community/Index.cfm?Lang=E> (accessed April 14, 2009)

<sup>4</sup> Statistics Canada, Custom Data Run, West Kelowna Geography, 2006 Census Data, April 2009

**Population and Density 2001 to 2006**

	2001 <sup>5</sup>		2006 <sup>6</sup>	
	Population	Population density per square km	Population	Population density per square km
British Columbia	3,907,738	4.2	4,113,487	4.4
Central Okanagan	147,739	50.9	162,276	55.9
City of Kelowna	96,288	455.9	106,707	504.1
District of West Kelowna <sup>7</sup>	N/A	N/A	27,095	233.2
District of Lake Country	9,267	75.9	9,606	78.6
District of Peachland	4,654	291.0	4,883	305.6
Central Okanagan J (Including West Kelowna)	26,001	20.1	28,972	22.3
Central Okanagan (EA)	3,672	3.0	3,978	3.2

<sup>5</sup> Statistics Canada. 2007. Central Okanagan, British Columbia (table). 2006 Community Profiles. 2006 Census. Statistics Canada Catalogue no. 92-591-XWE. Ottawa. Released March 10, 2009.

<http://www12.statcan.ca/english/census06/data/profiles/community/Index.cfm?Lang=E> (accessed April 14, 2009)

<sup>6</sup> *IBID*

<sup>7</sup> Statistics Canada, Custom Data Run, West Kelowna Geography, 2006 Census Data, April 2009

### 1.3 POPULATION GROWTH COMPONENTS

Population growth in the region has been due primarily to in-migration. High inflows of migrants have resulted in the population of the region increasing by 90% from 92,772 in 1986 to 183,712 in 2009. The region was one of the highest growth areas in the province through the 1990s. The past several years have seen slower, but steady growth. The average rate of population growth from 2000 to 2009 has been 2.1% compared to 4.0% in the 1990s.

#### Population Growth Components 1996 to 2009<sup>8</sup>

Year	Natural Increase	Net Migration	Population	Population Growth Rate
1996	500	3,262	141,628	2.7%
1997	368	3,467	145,463	2.7%
1998	214	3,085	148,762	2.3%
1999	201	1,342	150,305	1.0%
2000	256	1,537	152,098	1.2%
2001	173	1,885	154,156	1.4%
2002	-34	1,570	155,692	1.0%
2003	-13	2,585	158,264	1.7%
2004	-101	1,170	159,333	0.7%
2005	-71	3,880	163,142	2.4%
2006	-21	4,296	167,417	2.6%
2007	69	6,566	174,052	4.0%
2008	48	6,014	180,114	3.5%
2009	218	3,380	183,712	2.0%

Note: BC Stats population estimates generally differ from Statistics Canada Census counts and projections.

<sup>8</sup> Population Section, BC Stats, Ministry of Labour and Citizens' Services, March 2009, P.E.O.P.L.E. 33 Projection Run

#### 1.4 MIGRATION COMPONENTS

Intra-provincial migration has historically been the largest segment of migration to the Central Okanagan. However, interprovincial migration has been an increasingly significant migration component over the past four years. The region has experienced a smaller but steady flow of international migration over the past four years as well.

Migration Components 1995/96 to 2006/07<sup>9</sup>

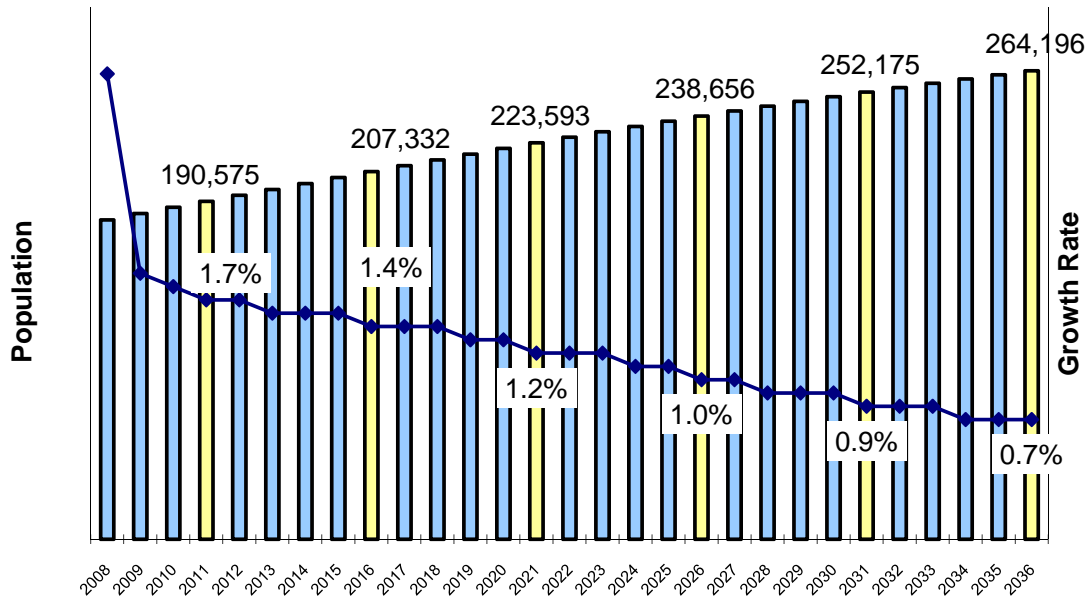
Year	International (Net)	Interprovincial (Net)	Intra-Provincial (Net)	Total Net Migration
1995 / 96	550	1,271	1,743	3,564
1996 / 97	335	719	1,818	2,872
1997 / 98	258	(179)	2,240	2,319
1998 / 99	72	(271)	2,177	1,978
1999 / 00	128	(291)	1,668	1,505
2000 / 01	339	(182)	1,593	1,750
2001 / 02	45	(27)	2,062	2,080
2002 / 03	(252)	827	2,243	2,818
2003 / 04	271	1,275	1,486	3,032
2004 / 05	327	1,205	1,250	2,782
2005 / 06	361	1,542	1,810	3,713
2006 / 07	371	1,718	1,810	3,899

<sup>9</sup> BC Stats, Ministry of Labour and Citizens' Services, Feb 2008, British Columbia Regional District Migration Components, <http://www.bcstats.gov.bc.ca/data/pop/mig/rdcomp07.pdf> (Accessed April 15, 2009)

### 1.5 POPULATION GROWTH PROJECTIONS<sup>10</sup>

The population of the Central Okanagan is projected to grow to 264,196 by 2036. However, the growth rate is expected to decline steadily over this period from 3.5% in 2008 to only 0.7% by 2036.

Population Growth Projections 2008 to 2036



<sup>10</sup> Population Section, BC Stats, Ministry of Labour and Citizens' Services, 2007, P.E.O.P.L.E. 32 Projection Run

## 1.6 FORECAST POPULATION GROWTH BY COMPONENT

The net population growth projection from 2008 to 2036 indicates that all growth in the region will result from positive net migration. Net migration is expected to more than offset declining natural increase. Net natural increase is expected to be increasingly negative over the next three decades. Fertility rates have been declining and have consistently been lower than the provincial average since the mid-1990s.

Population Growth Projections by Component 2008 to 2036<sup>11</sup>

Year	Natural Increase	Net Migration	Net Population Growth	% Change in Population
2008	48	6,014	180,114	3.5%
2009	218	3,380	183,712	2.0%
2010	198	3,307	187,217	1.9%
2011	184	3,174	190,575	1.8%
2012	169	3,220	193,964	1.8%
2013	164	3,144	197,272	1.7%
2014	157	3,173	200,602	1.7%
2015	145	3,225	203,972	1.7%
2016	117	3,243	207,332	1.6%
2017	104	3,236	210,672	1.6%
2018	63	3,214	213,949	1.6%
2019	28	3,216	217,193	1.5%
2020	(3)	3,217	220,407	1.5%
2021	(45)	3,231	223,593	1.4%
2022	(94)	3,220	226,719	1.4%
2023	(148)	3,220	229,791	1.4%
2024	(206)	3,234	232,819	1.3%
2025	(257)	3,207	235,769	1.3%
2026	(318)	3,205	238,656	1.2%
2027	(371)	3,204	241,489	1.2%
2028	(414)	3,180	244,255	1.1%
2029	(465)	3,156	246,946	1.1%
2030	(511)	3,157	249,592	1.1%
2031	(557)	3,140	252,175	1.0%
2032	(624)	3,144	254,695	1.0%
2033	(680)	3,159	257,174	1.0%
2034	(739)	3,154	259,589	0.9%
2035	(800)	3,142	261,931	0.9%
2036	(858)	3,123	264,196	0.9%

<sup>11</sup> Population Section, BC Stats, Ministry of Labour and Citizens' Services, March 2009, P.E.O.P.L.E. 33 Projection Run

## 1.7 POPULATION DEMOGRAPHICS

### 1.7.1 AGE DISTRIBUTION

The population of the Central Okanagan is gradually aging. The median age of the population was 44.2 years in 2006, compared to 42.0 in 2001 and been increasing steadily since the 1980s. The proportion of the population aged 65 years and over increased from 22% in 1996 to 24% in 2009. The median age of the Central Okanagan's population has been higher than the provincial median (41.5) for over 20 years, due in part to the areas large retirement base.

#### Age Distribution<sup>12</sup>

	1996	% of Population	2001	% of Population	2006	% of Population	2009	% of Population
Under 5	8,302	6%	7,483	5%	7,397	4%	8,349	5%
Ages 5-9	9,185	6%	9,056	6%	8,391	5%	8,649	5%
Ages 10-14	9,503	7%	10,109	7%	10,052	6%	10,037	5%
Ages 15-19	8,745	6%	10,336	7%	11,198	7%	11,434	6%
Ages 20-24	8,587	6%	8,865	6%	11,109	7%	12,781	7%
Ages 25-29	8,982	6%	8,359	5%	9,309	6%	11,935	6%
Ages 30-34	10,714	8%	9,434	6%	9,141	5%	10,558	6%
Ages 35-39	11,662	8%	11,737	8%	10,435	6%	11,731	6%
Ages 40-44	10,957	8%	12,650	8%	13,032	8%	12,179	7%
Ages 45-49	9,816	7%	11,486	7%	13,474	8%	15,064	8%
Ages 50-54	7,573	5%	10,504	7%	12,261	7%	14,063	8%
Ages 55-59	6,884	5%	8,455	5%	11,363	7%	12,529	7%
Ages 60-64	6,876	5%	7,819	5%	9,423	6%	11,313	6%
Ages 65 plus	23,842	17%	27,863	18%	30,832	18%	33,090	18%
Totals	141,628	100%	154,156	100%	167,417	100%	183,712	100%

<sup>12</sup> Population Section, BC Stats, Ministry of Labour and Citizens' Services, March 2009, P.E.O.P.L.E. 33 Projection Run

### 1.7.2 POPULATION GROWTH PROJECTIONS BY AGE GROUP

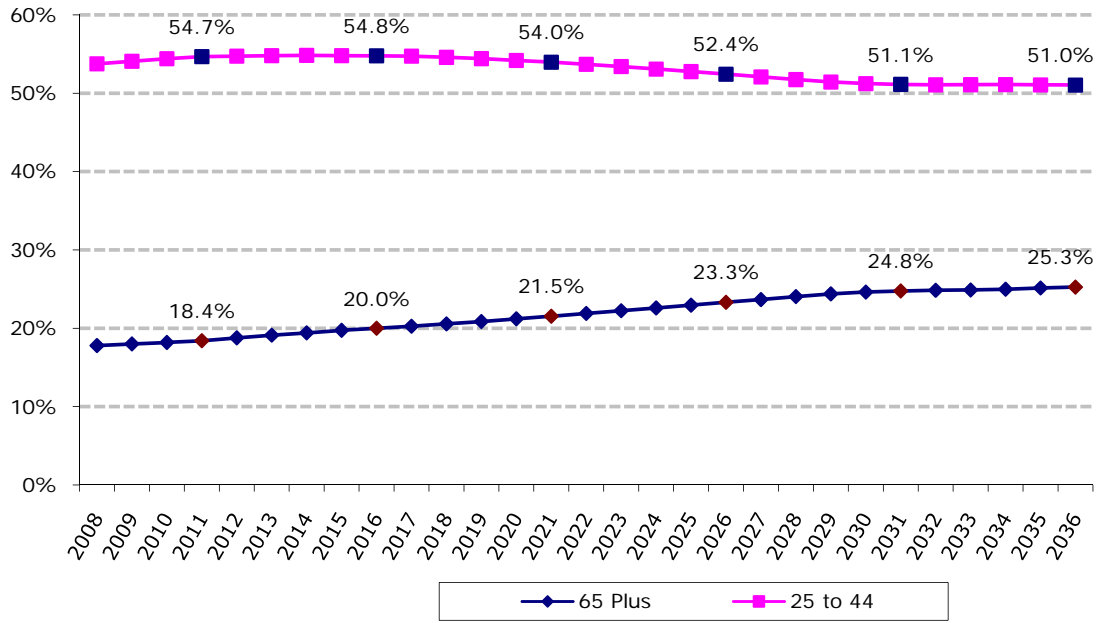
The proportion of population aged 65 years plus is expected to increase over the next three decades from 17.8% in 2008 to 25.3% in 2036. However, over the same period, the proportion of those people aged 25 to 64 years is expected to decline only slightly from 53.1% in 2008 to 51.0% in 2036.

Population by Age Group 2008 to 2036<sup>13</sup>

Year	Under 5	Ages 5-12	Ages 13-17	Ages 18-24	Ages 25-44	Ages 45-64	Ages 65 plus	Totals
2008	7,988	14,544	11,043	17,651	45,348	51,482	32,058	180,114
2009	8,349	14,432	10,914	17,555	46,403	52,969	33,090	183,712
2010	8,731	14,434	10,710	17,414	47,636	54,227	34,065	187,217
2011	9,108	14,457	10,633	17,070	49,110	55,105	35,092	190,575
2012	9,413	14,599	10,533	16,806	50,570	55,609	36,434	193,964
2013	9,729	14,780	10,397	16,535	52,135	55,972	37,724	197,272
2014	9,900	15,136	10,282	16,315	53,417	56,594	38,958	200,602
2015	10,075	15,614	10,161	16,056	54,471	57,319	40,276	203,972
2016	10,235	16,011	10,176	15,843	55,500	58,088	41,479	207,332
2017	10,394	16,459	10,171	15,616	56,590	58,746	42,696	210,672
2018	10,521	16,931	10,195	15,505	57,554	59,234	44,009	213,949
2019	10,608	17,418	10,231	15,403	58,519	59,689	45,325	217,193
2020	10,676	17,849	10,465	15,237	59,457	59,971	46,752	220,407
2021	10,731	18,259	10,598	15,153	60,303	60,383	48,166	223,593
2022	10,766	18,498	10,947	15,120	61,031	60,704	49,653	226,719
2023	10,798	18,721	11,319	15,102	61,694	61,038	51,119	229,791
2024	10,814	18,915	11,711	15,155	62,061	61,552	52,611	232,819
2025	10,817	19,093	12,013	15,310	62,283	62,127	54,126	235,769
2026	10,820	19,232	12,333	15,462	62,364	62,787	55,658	238,656
2027	10,810	19,327	12,507	15,886	62,333	63,461	57,165	241,489
2028	10,804	19,391	12,684	16,227	62,319	64,084	58,746	244,255
2029	10,803	19,427	12,833	16,626	62,007	65,006	60,244	246,946
2030	10,807	19,448	12,989	17,036	61,620	66,230	61,462	249,592
2031	10,815	19,462	13,100	17,454	61,213	67,697	62,434	252,175
2032	10,836	19,458	13,178	17,822	60,954	69,134	63,313	254,695
2033	10,868	19,447	13,237	18,202	60,726	70,679	64,015	257,174
2034	10,913	19,437	13,276	18,419	60,700	71,978	64,866	259,589
2035	10,964	19,426	13,300	18,632	60,753	72,988	65,868	261,931
2036	11,024	19,421	13,315	18,814	60,933	73,936	66,753	264,196

<sup>13</sup> Population Section, BC Stats, Ministry of Labour and Citizens' Services, March 2009, P.E.O.P.L.E. 33 Projection Run

Proportion of Population Aged 25 to 44 and 65 Years Plus<sup>14</sup>



<sup>14</sup> Population Section, BC Stats, Ministry of Labour and Citizens' Services, March 2009, P.E.O.P.L.E. 33 Projection Run

### 1.7.3 ETHNICITY

The Central Okanagan has significantly lower proportion of visible minorities than BC in general. Only 5% of the population in the region are a visible minority compared to 25% for BC overall. The most common visible minorities in the region are South Asian (28%), Chinese (18%), and Japanese (15%).

#### Visible Minority Population Characteristics<sup>15</sup>

	RDCO		BC
	Population	% of Population	% of Population
Total population	160,565	100%	100%
Total visible minority population	8,325	5%	25%
Chinese	1,465	18%	40%
South Asian	2,345	28%	26%
Black	660	8%	3%
Filipino	415	5%	9%
Latin American	530	6%	3%
Southeast Asian	715	9%	4%
Arab	65	1%	1%
West Asian	190	2%	3%
Korean	270	3%	5%
Japanese	1,230	15%	3%
Visible minority, n.i.e.	130	2%	0%
Multiple visible minority	305	4%	3%
Not a visible minority	152,240	95%	75%

<sup>15</sup> Statistics Canada. 2007. Central Okanagan, British Columbia (table). 2006 Community Profiles. 2006 Census. Statistics Canada Catalogue no. 92-591-XWE. Ottawa. Updated March 10, 2009.  
<http://www12.statcan.ca/english/census06/data/profiles/community/Index.cfm?Lang=E> (accessed April 15, 2009)

#### 1.7.4 MOTHER TONGUE

The region has a higher proportion of English only speaking people than BC in general with 85% English only compared to 71% for BC.

##### Mother tongue<sup>16</sup>

	RDCO		BC
	Population	% of Population	% of Population
Total population	160,560	100%	100%
English only	136,020	85%	71%
French only	2,525	2%	1%
English and French	175	0%	0%
Other language(s)	21,835	14%	28%

##### Language Spoken Most Often at Home<sup>17</sup>

	RDCO		BC
	Population	% of Population	% of Population
Total population	160,565	100%	100%
English	152,435	95%	82%
French	580	0%	0%
Non-official language	6,000	4%	16%
English and French	90	0%	0%
English and non-official language	1,430	1%	2%
French and non-official language	0	0%	0%
English, French and non-official language	15	0%	0%

<sup>16</sup> Statistics Canada. 2007. Central Okanagan, British Columbia (table). 2006 Community Profiles. 2006 Census. Statistics Canada Catalogue no. 92-591-XWE. Ottawa. Released March 10, 2009.

<http://www12.statcan.ca/english/census06/data/profiles/community/Index.cfm?Lang=E> (accessed April 15, 2009).

<sup>17</sup> IBID

German is the most common non-English language spoken most often at home (0.8%) followed by Punjabi (0.7%).

**Top 6 Languages Spoken Most Often at Home (% of single response) <sup>18</sup>**

	RDCO	
	Population	% of Population
Total Population	159,015	100.0%
English	152,430	95.9%
German	1,240	0.8%
Punjabi (Punjabi)	1,045	0.7%
Chinese (All)	630	0.4%
French	585	0.4%
Vietnamese	335	0.2%

<sup>18</sup> *Statistics Canada, 2006 Census 97-555-XCB2006038 (prepared by BC Stats, Revised Jan 9, 2008, <http://www.bcstats.gov.bc.ca/data/cen06/topics/homelnon.pdf>, (Accessed April 15, 2009)*

### 1.7.5 ABORIGINAL POPULATION

The Westbank First Nation is comprised of five reserves located in the Central Okanagan. The total land area of these reserves is 2,161.0 hectares. The total registered population of status First Nation people on Westbank First Nation's reserves was 666 persons as of April 2008.

The Central Okanagan region has a slightly lower proportion of Aboriginal population (4%) compared to BC in general (5%).

#### Aboriginal population<sup>19</sup>

	RDCO		BC
	Population	% of Population	% of Population
Total Aboriginal and non-Aboriginal identity population	160,560	100%	100%
Aboriginal identity population	6,207	4%	5%
Non-Aboriginal identity population	154,440	96%	95%

#### Westbank First Nation Reserves<sup>20</sup>

	Reserve No.	Size in Hectares
Mission Creek 8	07419	2.0
Tsinstikeptum 9	07420	641.8
Tsinstikeptum 10	07421	339.0
Medicine Hill	09382	515.7
Medicine Creek 12	09383	662.5

<sup>19</sup> Statistics Canada. 2007. *Aboriginal Population Profile, 2006 Census*. Statistics Canada Catalogue no. 92-594-XWE. Ottawa. Updated March 10, 2009. [http://www12.statcan.ca/census-recensement/2006/dp-pd/prof/92-594/details/page\\_Definitions.cfm?Lang=E&Geo1=BAND&Code1=59630524&Geo2=PR&Code2=59&Data=Count&SearchText=Westbank+First+Nation&SearchType=Begins&SearchPR=01&B1=All&Custom=&LineID=1000](http://www12.statcan.ca/census-recensement/2006/dp-pd/prof/92-594/details/page_Definitions.cfm?Lang=E&Geo1=BAND&Code1=59630524&Geo2=PR&Code2=59&Data=Count&SearchText=Westbank+First+Nation&SearchType=Begins&SearchPR=01&B1=All&Custom=&LineID=1000) (accessed April 15, 2009)

<sup>20</sup>Department of Indian Affairs and Northern Development, First Nation Profiles [http://sdiprod2.inac.gc.ca/FNProfiles/FNProfiles\\_Reserves.asp?BAND\\_NUMBER=601&BAND\\_NAME=Westbank+First+Nation](http://sdiprod2.inac.gc.ca/FNProfiles/FNProfiles_Reserves.asp?BAND_NUMBER=601&BAND_NAME=Westbank+First+Nation), (Accessed May 19, 2008)

**Registered Residency as of April, 2008<sup>21</sup>**

	<b># of People</b>
Males On Own Reserve	212
Females On Own Reserve	197
Males On Other Reserves	12
Females On Other Reserves	10
Males On Own Crown Land	0
Females On Own Crown Land	0
Males On Other Band Crown Land	0
Females On Other Band Crown Land	0
Males On No Band Crown Land	0
Females On No Band Crown Land	0
Males Off Reserve	115
Off Reserve	120
Total Registered Population	666

---

<sup>21</sup> Department of Indian Affairs and Northern Development, First Nation Profiles  
[http://sdiprod2.inac.gc.ca/FNProfiles/FNProfiles\\_GeneralInformation.asp?BAND\\_NUMBER=601&BAND\\_NAME=Westbank+First+Nation](http://sdiprod2.inac.gc.ca/FNProfiles/FNProfiles_GeneralInformation.asp?BAND_NUMBER=601&BAND_NAME=Westbank+First+Nation), (Accessed May 19, 2008)

### 1.7.6 LEGAL MARITAL STATUS CHARACTERISTICS

The proportion of legally married couples in the Central Okanagan (52.8%) is significantly higher than the general population of BC (50.4%). The proportion of single people in the Central Okanagan is correspondingly lower (28.0% compared to 32.1%). The proportion of separated, divorced and widowed people were all slightly higher for the Central Okanagan than for BC overall.

#### Legal Marital Status Characteristics<sup>22</sup>

	<b>Total Population 15 Years and Over</b>	<b>Never Legally Married (Single)</b>	<b>Legally Married (and not Separated)</b>	<b>Separated, but Still Legally Married</b>	<b>Divorced</b>	<b>Widowed</b>
British Columbia	3,433,880	1,102,395	1,730,480	110,575	285,860	204,570
% of BC Population	-	32.1%	50.4%	3.2%	8.3%	6.0%
Central Okanagan (RDCO)	136,755	38,225	72,210	4,665	12,520	9,130
% of RDCO Population		28.0%	52.8%	3.4%	9.2%	6.7%
City of Kelowna	90,310	26,955	44,815	3,205	8,615	6,720
District of West Kelowna <sup>23</sup>	22,160	5,475	13,500	645.0	1,550	990
District of Lake Country	8,015	2,075	4,615	245	695	385
District of Peachland	4,325	870	2,600	135	440	275

<sup>22</sup> Statistics Canada. 2007. *Central Okanagan, British Columbia (table). 2006 Community Profiles. 2006 Census. Statistics Canada Catalogue no. 92-591-XWE. Ottawa. Updated March 10, 2009.*

<http://www12.statcan.ca/english/census06/data/profiles/community/Index.cfm?Lang=E> (Accessed April 15, 2009)

<sup>23</sup> Statistics Canada, Custom Data Run, West Kelowna Geography, 2006 Census Data, April 2009

### 1.7.7 GENDER

The proportion of males versus females is relatively equal in the Central Okanagan, with slightly more females (51.5%) than males (48.5%). The proportion of males to females is similar to that for the province as a whole. There is little variation in the proportion of males to females between the communities of the Central Okanagan as well.

#### Gender<sup>24</sup>

	<b>Total Population</b>	<b>Males</b>	<b>Females</b>
British Columbia	4,113,485	2,013,990	2,099,495
% of Population (BC)		49.0%	51.0%
Central Okanagan (RDCO)	162,275	78,745	83,530
% of Population (RDCO)		48.5%	51.5%
City of Kelowna	106,705	48,0%	52.0%
District of West Kelowna <sup>25</sup>	27,095	49.9%	50.1%
District of Lake Country	9,605	50.1%	49.9%
District of Peachland	4,880	49.1%	51.0%

### 1.7.8 EDUCATIONAL ATTAINMENT

The proportion of people aged 15 years and over that have a minimum of a high school certificate or equivalent in the Central Okanagan (80.4%) is similar to BC overall (80.1%). The proportion of people with an apprenticeship or trades certificate (14.4%) or a college certificate or diploma (or other non-university certificate or diploma) (19.2%) are significantly higher than the BC averages. The proportion of people aged 15 years and older with university educations are correspondingly lower in the Central Okanagan compared to the BC average.

#### Educational Attainment<sup>26</sup>

	<b>RDCO</b>		<b>BC</b>
	<b>People</b>	<b>% of Population</b>	<b>% of Population</b>
Total population 15 years and over	135,045		
No certificate, diploma or degree	26,525	19.6%	19.9%
High school certificate or equivalent	39,600	29.3%	27.9%
Apprenticeship or trades certificate or diploma	19,380	14.4%	10.9%
College, CEGEP or other non-university certificate or diploma	25,890	19.2%	16.7%
University certificate or diploma below the bachelor level	6,695	5.0%	5.4%
University certificate, diploma or degree	16,960	12.6%	19.3%

<sup>24</sup> Statistics Canada. 2007. Central Okanagan, British Columbia (table). 2006 Community Profiles. 2006 Census. Statistics Canada Catalogue no. 92-591-XWE. Ottawa. Updated March 10, 2009.  
<http://www12.statcan.ca/english/census06/data/profiles/community/Index.cfm?Lang=E> (accessed April 15, 2009).

<sup>25</sup> Statistics Canada, Custom Data Run, West Kelowna Geography, 2006 Census Data, April 2009

<sup>26</sup> IBID

## 1.8 HOUSEHOLD CHARACTERISTICS

### 1.8.1 HOUSEHOLD SIZE AND COMPOSITION

The number of households containing couples without children is significantly higher in the Central Okanagan (35.5%) than in BC overall (29.6%). The average household size is lower in the Central Okanagan as well (2.4 persons compared to 2.5 persons overall).

#### Selected Household Characteristics<sup>27</sup>

	RDCO		BC
	Households	% of Households	% of Households
Total private households	67,000		
Households containing a couple (married or common-law) with children	15,595	23.3%	26.3%
Households containing a couple (married or common-law) without children	23,805	35.5%	29.6%
One-person households	17,130	25.6%	28.0%
Other household types	10,465	15.6%	16.1%
Average household size	2.4		2.5

The proportion of two person households is higher in the RDCO (40.6%) than for BC overall (34.2%).

#### Private Households by Size<sup>28</sup>

	RDCO		BC
	Households	% of Households	% of Households
Total number of private households	66,925	100.0%	100.0%
1 person	17,165	25.6%	28.1%
2 persons	27,185	40.6%	34.2%
3 persons	9,090	13.6%	14.8%
4 to 5 persons	11,960	17.9%	19.6%
6 or more persons	1,520	2.3%	3.3%

<sup>27</sup> Statistics Canada. 2007. Central Okanagan, British Columbia (table). 2006 Community Profiles. 2006 Census. Statistics Canada Catalogue no. 92-591-XWE. Ottawa. Updated March 10, 2009.

<http://www12.statcan.ca/english/census06/data/profiles/community/Index.cfm?Lang=E> (accessed April 15, 2009)

<sup>28</sup> BC Stats, 2006 Census Profile, Central Okanagan, CD, Revision 5, March 2009,

<http://www.bcstats.gov.bc.ca/data/cen06/profiles/detailed/59035000.pdf> (Accessed April 15, 2009)

### 1.8.2 HOUSEHOLD INCOME

Overall, median household incomes<sup>29</sup> were lower in the Central Okanagan than for BC potentially as a result of the large retirement base. Median household incomes for households with children was higher in the Central Okanagan than for BC overall.

There are several reasons for the region's lower than average median income:

- A large portion of retired people that do not have employment income,
- A higher than average number of smaller, non-unionized companies,
- A higher portion of the labour force that are self-employed,
- The climate and lifestyle of the area attract a higher percentage of social assistance recipients than many other areas in BC.

#### Household Median Income in 2005<sup>30</sup>

	RDCO	BC
All private households (\$)	\$50,308	\$52,709
Couple households with children (\$)	\$81,066	\$79,509
Couple households without children (\$)	\$58,214	\$63,969
One-person households (\$)	\$26,430	\$27,773
Other household types (\$)	\$44,848	\$47,266

While average household incomes have been consistently below the BC average, they have grown faster than average over the past three years.

#### Average Household Income by Year<sup>31</sup>

	RDCO	% Change	BC	% Change
2001	\$48,100		\$53,637	
2002	\$49,600	3.1%	\$55,000	2.5%
2003	\$51,400	3.6%	\$57,600	4.7%
2004	\$58,700	14.2%	\$63,500	10.2%
2005	\$58,000	(1.2%)	\$62,800	(1.1%)
2006	\$58,109	0.2%	\$63,048	0.4%
2007	\$65,139	12.1%	\$69,968	11.0%
2008	\$67,746	4.4%	\$72,600	3.8%
2009	\$73,400	8.3%	\$75,800	4.4%

<sup>29</sup> Note: The median income of a specified group is that amount which divides their income size distribution, ranked by size of income, into two halves. That is, the incomes of the first half of the group are below the median, while those of the second half are above the median.

<sup>30</sup> Statistics Canada. 2007. Central Okanagan, British Columbia (table). 2006 Community Profiles. 2006 Census. Statistics Canada Catalogue no. 92-591-XWE. Ottawa. Updated March 10, 2009.

<http://www12.statcan.ca/english/census06/data/profiles/community/Index.cfm?Lang=E> (accessed April 15, 2009)

<sup>31</sup> Financial Post, 2009, FP Markets Canadian Demographics 2009.

Overall, median employment income for the Central Okanagan was lower than for the Province as a whole. Lake Country had the highest median income in the Central Okanagan (\$28,735).

**2006 Median Employment Income by Community<sup>32</sup>**

	<b>Total</b>	<b>Males</b>	<b>Females</b>
British Columbia	\$27,862	\$34,934	\$22,419
RCDO	\$26,473	\$32,730	\$21,717
Kelowna	\$26,611	\$32,617	\$22,011
West Kelowna (2005) <sup>33</sup>	\$26,442	\$35,453	\$20,124
Lake Country	\$28,735	\$35,737	\$23,372
Peachland	\$22,668	\$28,445	\$18,908

**Median Total Income by FSA (Forward Sortation Area)<sup>34</sup>**

<b>FSA</b>	<b>Males</b>	<b>Females</b>	<b>Total</b>
VOH	\$30,821	\$18,883	\$23,687
V1A	\$36,385	\$19,440	\$27,441
V1P	\$37,281	\$24,427	\$30,330
V1V	\$44,214	\$26,622	\$34,010
V1W	\$40,500	\$25,802	\$31,925
V1X	\$31,091	\$19,613	\$24,265
V1Y	\$31,043	\$21,538	\$25,436
V1Z	\$38,349	\$22,554	\$29,535
V4T	\$36,549	\$20,424	\$27,166
V4V	\$35,163	\$22,078	\$27,696

<sup>32</sup> BC Stats, Neighbourhood Income and Demographics, 2006, April 2008, <http://www.bcstats.gov.bc.ca/data/dd/nid06/nidlocdata2006.pdf>, (Accessed April 15, 2009)

<sup>33</sup> Statistics Canada, Custom Data Run, West Kelowna Geography, 2006 Census Data, April 2009

<sup>34</sup> BC Stats, Neighbourhood Income and Demographics, 2006, April 2008, <http://www.bcstats.gov.bc.ca/data/dd/nid06/nidlocdata2006.pdf>, (Accessed April 15, 2009)

### 1.8.3 HOUSEHOLD EXPENDITURES

Overall, household expenditures in the Central Okanagan (\$71,172) were lower than the BC average (\$72,945). The distribution of household expenditures by group was very similar to the typical BC household.

#### Household Expenditures – 2009 Estimates<sup>35</sup>

	RDCO		BC
	Expenditure	% of Total Expenditures	% of Total Expenditures
Taxes & Securities	\$17,435	24.5%	25.2%
Shelter	\$14,438	20.3%	19.9%
Other *	\$10,489	14.7%	14.2%
Transportation	\$9,609	13.5%	13.3%
Food	\$7,764	10.9%	11.1%
Recreation, Reading and Education	\$5,653	7.9%	8.3%
Health & Personal Care	\$3,076	4.3%	4.2%
Clothing	\$2,707	3.8%	3.9%
Total Expenditures	\$71,172	100.0%	100.0%

---

\* Other includes household operation; household furnishings and equipment; tobacco products and alcoholic beverages; gifts and contributions; and miscellaneous

<sup>35</sup> Financial Post, 2009, FP Markets Canadian Demographics 2009.