

## 5 Infrastructure

### 5.1 TRANSPORTATION

#### 5.1.1 AIR

As the gateway for B.C.'s southern interior, Kelowna International Airport is vital to the region's economic prosperity. Along with aerospace businesses and world class education facilities, Kelowna International Airport represents an employment cluster of nearly 2,000 jobs and \$310 million in economic activity annually.<sup>104</sup>

The Kelowna International Airport is investing \$36 million to expand facilities to meet the growing demand as passenger numbers are forecast to grow to 1.6 million passengers in 2015. These include a new international arrivals concourse capable of handling 250 passengers per hour and a runway extension from 7300 feet to 8900 feet by November 2008.

#### 5.1.2 AIR TRAFFIC

The first quarter of 2008 proved to be the busiest in the history of Kelowna International Airport, with March being the busiest month ever. YLW was the 9th busiest airport in Canada during the first quarter of 2008, slightly ahead of Victoria.

A total of 379,091 passengers used the Airport in the first three months of this year compared to 361,128 for the same quarter last year, an increase of 18,207 passengers or 5%.

#### Kelowna International Airport Facts and Figures<sup>105</sup>

	2005	2006	2007	2008	
	Monthly Passenger Volumes	Monthly Passenger Volumes	Monthly Passenger Volumes	Monthly Passenger Volumes	Total-to-Date Passenger Volumes
January	89,656	104,256	120,075	125,448	125,448
February	90,229	100,113	113,013	124,644	250,092
March	95,961	110,771	128,040	128,999	379,091
April	74,718	88,067	106,406	106,532	485,623
May	82,202	93,049	109,572	110,622	596,245
June	83,228	92,936	106,583	107,133	703,378
July	92,439	105,744	113,575		
August	101,521	112,087	122,397		
September	85,470	98,538	106,129		
October	90,488	101,526	109,093		
November	86,948	98,955	103,101		
December	105,792	120,400	124,851		
Year Total	1,078,652	1,226,442	1,363,391		

<sup>104</sup> City of Kelowna, Kelowna International Airport, About YLW, <http://www.city.kelowna.bc.ca/CM/Page135.aspx>, (Accessed June 24, 2008)

<sup>105</sup> City of Kelowna, Kelowna International Airport, Facts and Figures, <http://www.city.kelowna.bc.ca/CM/Page182.aspx>, (Accessed July 24, 2008)

## Major Routes<sup>106</sup>

Kelowna International Airport services nine non-stop destinations and 372 worldwide destinations with one-stop connections.

### Non-Stop Destinations

Calgary -	AC Jazz, WestJet (seven days a week)
Edmonton -	Air Canada Jazz, WestJet (seven days a week)
Kamloops -	Central Mountain Air (Sundays)
Toronto -	WestJet (seven days a week), Air Canada (Seasonal)
Las Vegas -	WestJet (effective January 17)
Prince George -	Central Mountain Air (Monday-Friday)
Seattle -	Horizon Air (seven days a week)
Vancouver -	Air Canada and Air Canada Jazz, WestJet (seven days a week)
Victoria-	WestJet (seven days a week)

### Seasonal Non-Stop Flights

Cancun -	Sunquest, Transat Holidays
Los Cabos -	Sunquest
Puerto Vallarta -	Sunquest, Transat Holidays

### Customer Satisfaction

In August, 2006, the Airport's annual independent Customer Satisfaction and Benchmarking survey was completed, a program that provides a snapshot of passenger perception and experience at regional airports. Results continue to indicate an impressive level of satisfaction with Kelowna International's facilities and services among passengers. YLW received an overall high rating of 4.42 on the 5-point satisfaction scale, up from 4.34 in 2005, signaling the vast majority of passengers arriving and departing were very satisfied or satisfied. For comparison, a 3.5 rating is seen as very high around the world.<sup>107</sup>

---

<sup>106</sup> City of Kelowna, Kelowna International Airport, Destinations, <http://www.kelowna.ca/CM/Page1343.aspx>, (Accessed June 24, 2008)

<sup>107</sup> YLW Express, Kelowna International Airport Newsletter, March 2007

### 5.1.3 ROAD

Highway 97 is the Okanagan Valley's key north-south highway with connections to several east-west highways, including the Trans Canada Highway and Highways 3 (Crowsnest or Southern Trans Provincial Highway), 3A, 6 and 97C (Okanagan Connector). Highways 97A, 97B and 33 are north-south routes that parallel various sections along the Highway 97 spine. However, none of these routes provides a continuous connection between the communities in the north and the south.

**Okanagan Valley Road Network Map**



#### 5.1.4 TRAFFIC VOLUME<sup>108</sup>

Traffic measurement site P25-1NS-N monitors traffic on Highway 97, at the south end of the William R. Bennett Bridge. The TRADAS (TRAffic DAta System) has been used since 2004 to monitor traffic volume from 120 permanent and 550 occasional sites around the province. 65 of these measurement sites also provide information on vehicle length and speed. The TIG (Traffic Information GIS), used from 1994-2003, employed permanent traffic counters and short seven day counts along with mathematical modeling to approximate average numbers of vehicles at sites along the provincial highway system.

Both the TRADAS and TIG systems use common road-count terms in reports that display Annual Average Daily Traffic (AADT), Annual Average Weekday Traffic (AAWT), Summer Average Daily Traffic (SADT), and Annual Average Weekend Traffic (AAWET).

Below are summaries of traffic counts for Route 97 at the south end of the William R. Bennett Bridge.

#### Traffic Data for: William R. Bennett Bridge – P25-1NS-N 1997 - 2005

Year	AADT	AAWDT	AAWET
1997	41,595	44,476	35,488
1998	43,006	46,017	36,697
1999	43,989	46,889	37,824
2000	43,701	46,701	37,256
2001	43,809	46,616	37,772
2002	45,292	48,239	39,186
2003	45,992	49,098	39,498
2004	46,514	48,705	39,699
2005	46,786	49,132	39,604

---

<sup>108</sup> Ministry of Transportation, *Traffic Volumes Data, Traffic Data For: Okanagan Lake Bridge - P-25-1NS - N*, <http://www.th.gov.bc.ca/trafficData/index.asp>, (Accessed June 24, 2008)

---

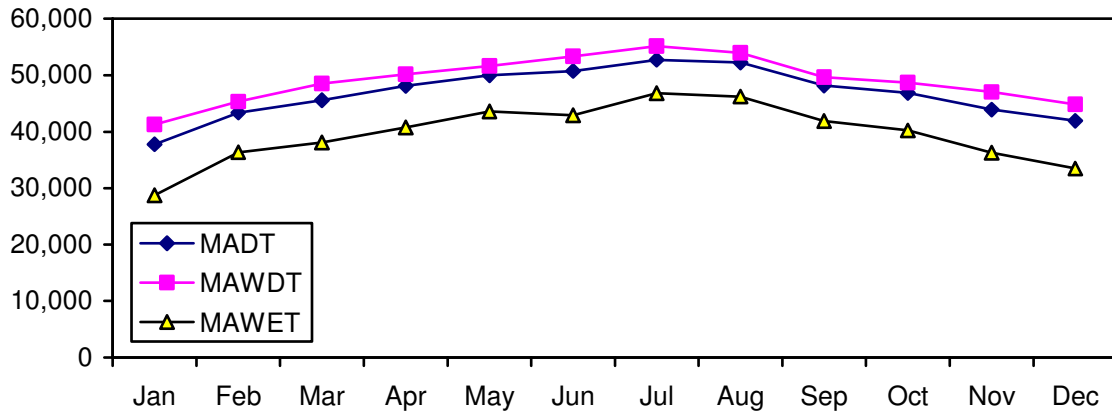
**5.1.5 TRAFFIC SEASONALITY**

Traffic volumes on Highway 97 are highly seasonal. Peak months for travel volumes peak in July and August and are lowest in January.

**2005 - Traffic Data for: William R. Bennett Bridge – P25-1N S-N<sup>109</sup>**

Month	MADT	MAWDT	MAWET
Jan	37,786	41,237	28,758
Feb	43,401	45,322	36,342
Mar	45,551	48,516	38,082
Apr	48,097	50,200	40,750
May	49,999	51,664	43,572
Jun	50,739	53,348	42,890
Jul	52,744	55,118	46,836
Aug	52,265	53,940	46,215
Sep	48,159	49,670	41,866
Oct	46,898	48,688	40,216
Nov	43,898	47,038	36,237
Dec	41,901	44,840	33,490

**2005 - Traffic Data for: William R. Bennett Bridge – P25-1NS-N**



<sup>109</sup> Ministry of Transportation, Traffic Volumes Data, Traffic Data For: Okanagan Lake Bridge - P-25-1NS - N, <http://www.th.gov.bc.ca/trafficData/index.asp>, (Accessed June 24, 2008)

**Definitions:**

**Annual Average Daily Traffic (AADT):** A calculated annual estimate of the average number of vehicles traveling through a traffic monitoring (TM) site during a midnight-to-midnight period on any day of the year.

**Annual Average Weekday Traffic (AAWDT):** A calculated annual estimate of the average number of vehicles traveling through a TM site for each weekday (Monday through Friday).

**Annual Average Weekend Traffic (AAWET):** A calculated annual estimate of the average number of vehicles traveling through a TM site for each day of the weekend (Saturday and Sunday).

**Monthly Average Daily Traffic (MADT):** A calculated estimate of the average number of vehicles traveling through a TM site in the course of a calendar month.

**Monthly Average Weekday Traffic (MAWDT):** A calculated estimate of the average number of vehicles traveling through a TM site for each weekday (Monday through Friday) in the course of a calendar month.

**Monthly Average Weekend Traffic (MAWET):** A calculated estimate of the average number of vehicles traveling through a TM site for each weekend day (Saturday and Sunday) in the course of a calendar month.

### 5.1.6 OKANAGAN LAKE BRIDGE REPLACEMENT PROJECT (WILLIAM R. BENNETT BRIDGE)<sup>110</sup>

The William R. Bennett Bridge has replaced the old three-lane Okanagan Lake Bridge in Kelowna. This corridor is the most congested stretch of highway outside the Lower Mainland accommodating an average of 46,000 vehicles per day. By 2017, more than 69,000 vehicles are expected to use the new bridge each day.

The William R. Bennett Bridge (Okanagan Lake Bridge), was completed in May 2008, and is the centerpiece of a revitalized road network in the Okanagan.

The five-lane structure will relieve congestion along Highway 97, ensuring the safe, efficient movement of people and goods through this growing corridor. It will play a pivotal role in growing the regional economy, particularly the Okanagan's signature tourism industry.



---

<sup>110</sup> Ministry of Transportation, William R. Bennett Bridge Project.  
<http://www.th.gov.bc.ca/WilliamRBennettBridge/index.htm> (Accessed June 24, 2008)

## **5.2 FREIGHT**

Over 15 truck lines, 10 freight forwarders, and three provincial and three inter-provincial freight forwarders service the area.

### **5.2.1 RAIL**

For passenger transportation, both BC Rail and VIA Rail offer passenger stops in Kamloops, however they do not pick up and deliver passengers in Kelowna. BC Rail runs north/south between North Vancouver and Prince George, while VIA Rail serves communities moving eastward from Vancouver towards Alberta. The Okanagan Valley Railway provides rail service to and from CPR's east-west main line at Sicamous. The Kelowna Pacific Railway has recently taken over as the short line operator of the Canadian National line with rights over the 77-kilometers (40-miles) between Kamloops to Kelowna and Vernon to Lumby.

To date, the Okanagan Valley Railway has transported a wide variety of products including forest products, grain and industrial products. The entry of Kelowna Pacific Railway provides more options in getting products to more markets.

Canadian Pacific, Canadian National and Burlington Northern Railway services interconnect across North America.

### **5.2.2 Bus**

The Central Okanagan is served by Greyhound Lines of Canada Ltd., which provides a network to all Canadian and US destinations.